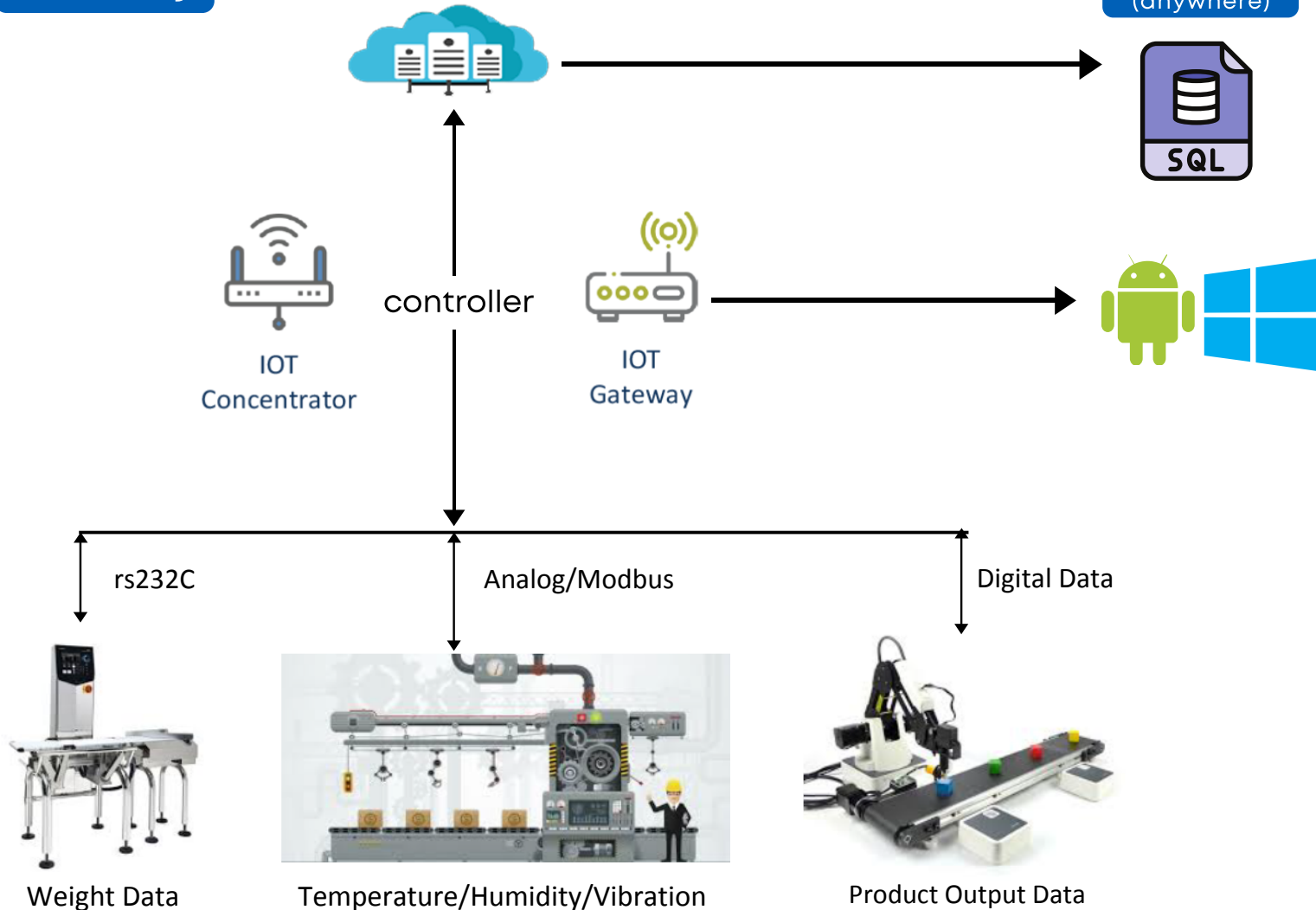


# Digital Retrofit – Machine Digitalization

Monitor data mesin, hasil produksi,  
OEE saat **WFH** via teknologi Cloud dan IOT

Factory

Home  
(anywhere)






## Product Line Up:

- IOT Gateway (Wireless) (MX-GW)
- IOT Concentrator (Wired) (NX102)

## Benefit:

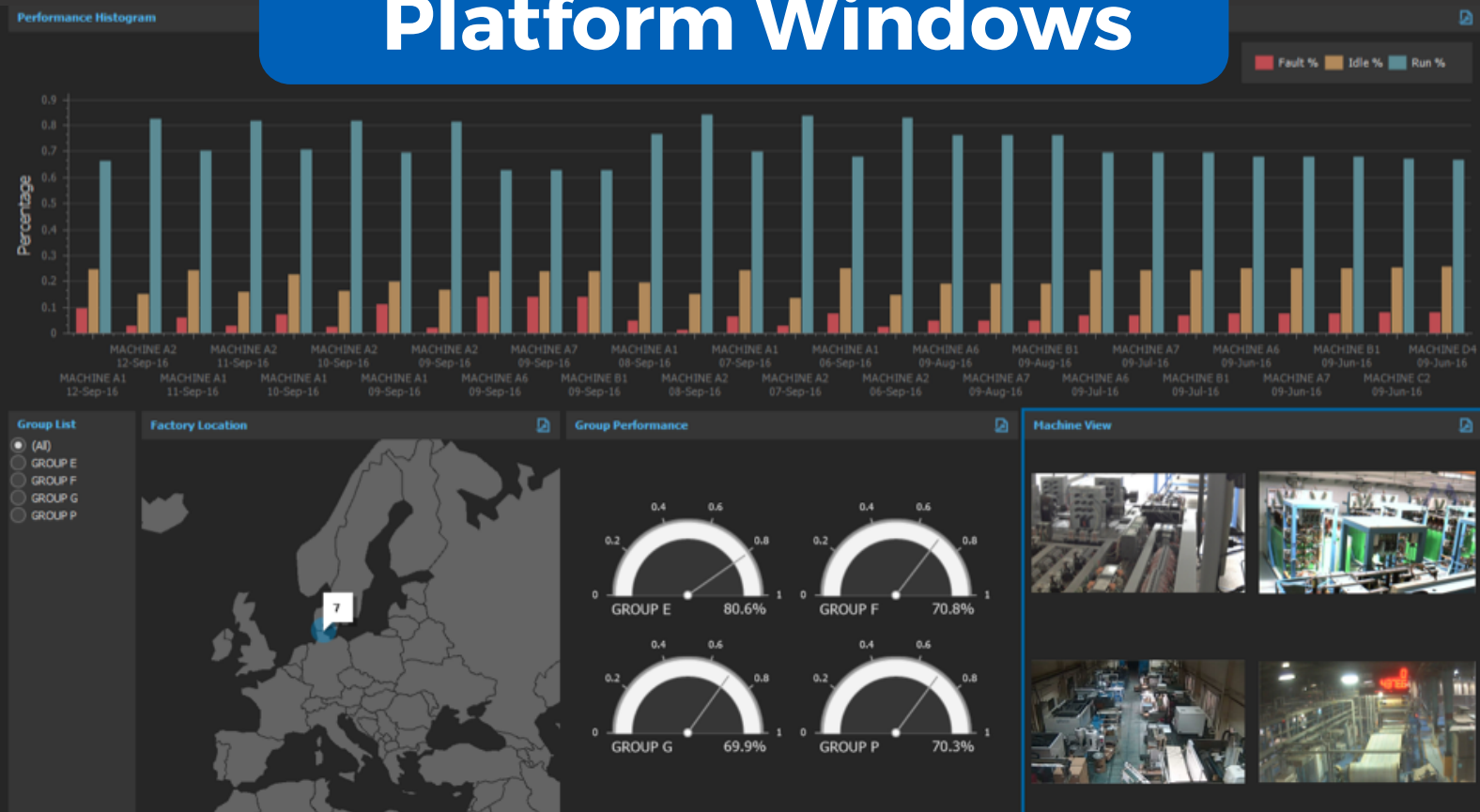
- 100% data record
- Real time alert
- **Monitor and control from anywhere**
- Highly secure

## Contact US:

 lia marsela  
 lia@elmecon-mk.com  
 +62 811-1227-829

Monitoring  
Mesin  
Dengan  
Mudah, Cocok  
**Untuk WFH**

# Dashboard Platform Windows



## Technical Specification

- Input available: Relay/transistor
- Data input : RS232c communication, Ethernet/IP
- Local display : 10 inch
- Operating Voltage : 240 VAC
- Wired Communication Distance : 90m (Ethernet Cable)
- Wireless Bandwidth : 2.4 GHz
- Wireless Standard : IEEE 802.1 a/b/g/n

## About PT Elmecon Multikencana

Established in 1978, PT Elmecon Multikencana is one of the pioneers of industrial components distribution in Indonesia. With our vision of being the most trusted provider of industry 4.0 products and services, we constantly strive for improvement in our technical capabilities, customer service and operations, while bringing in trusted brands from around the world.

## Contact US:

- 👤 lia marsela
- ✉️ [lia@elmecon-mk.com](mailto:lia@elmecon-mk.com)
- ☎️ +62 811-1227-829